

**Truly Victorian**  
**1908 Countryside Blouse**  
**TVE47**

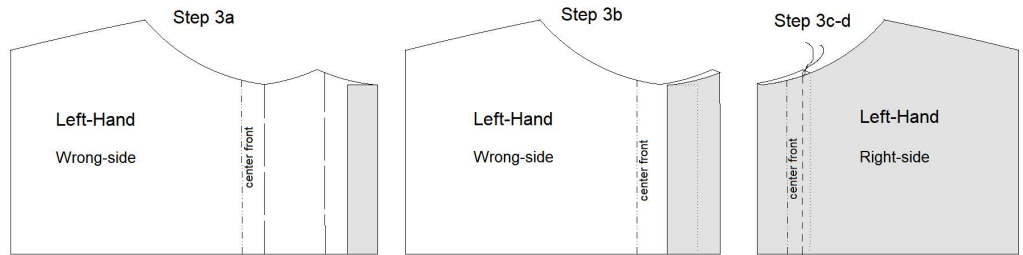
3. Front Placket - Left-hand side:

- a. Fold the center front edge to the wrong side, along the first fold line, 1/2" from the edge. OR trim away the edge along the first fold line.
- b. Fold the center front edge to the wrong side again, 7/8" from the edge, which is 1/8" narrower than the 2nd fold line.

- c. Fold the center front edge to the wrong side again, 7/8" from the edge.

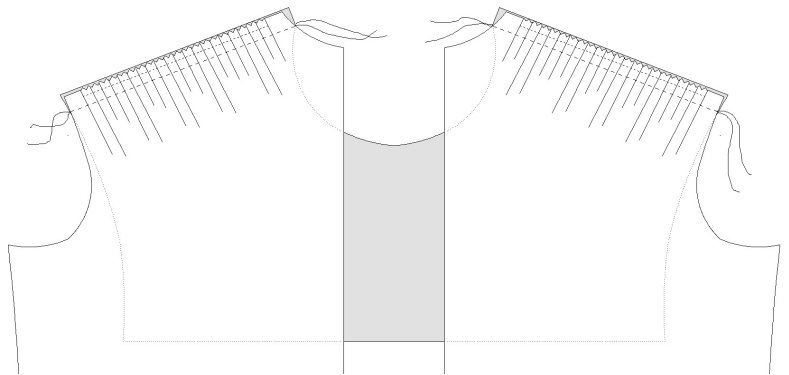
- d. Topstitch from the right side of the fabric, 3/4"

from the new center front edge, sewing the folds in place on the wrong side.



4. With Fronts, sew 2 rows of gather stitching between the dots, along the shoulder seam.
5. With Back, sew 2 rows of gather stitching between the dots, along the shoulder seam and center back waistline.
6. Yoke:

- a. With right-sides together, pin the top edge of the Fronts to front shoulder edges of one of the Yoke pieces, gathering the Front to fit.
- b. Pin the other Yoke piece, right side of Yoke to wrong-side of Front, so that the Fronts are between the two yoke pieces.



- c. Stitch the seam through all 3 layers. Turn right-sides out, match Yokes together, and press seam allowances inside the two Yoke pieces. Optional: top stitch close to the seam line, through all 3 layers.
- d. Baste along the neck edge of the yokes to hold the layers together.
- e. With right-sides together, pin the top edge of the Back to the bottom edge of the fashion Yoke piece, gathering the Back to fit. Seam in place.
- f. Press all the seam allowances up over the Yoke.
- g. Press the seam allowance of the lining Yoke to the wrong side.
- h. Match the fold of the lining Yoke to the seam line, covering the seam allowances. Topstitch in place from the fashion side of the blouse.

7. Collar:

- a. With one Collar Band piece, baste a stitching line 1/2" from the neck edge. Fold the edge to the wrong side, along the stitching line, and press in place.
- b. Match both Collar Band pieces, right-sides together.
- c. Sew around the outer edge of the collar, leaving the blouse edge open.

