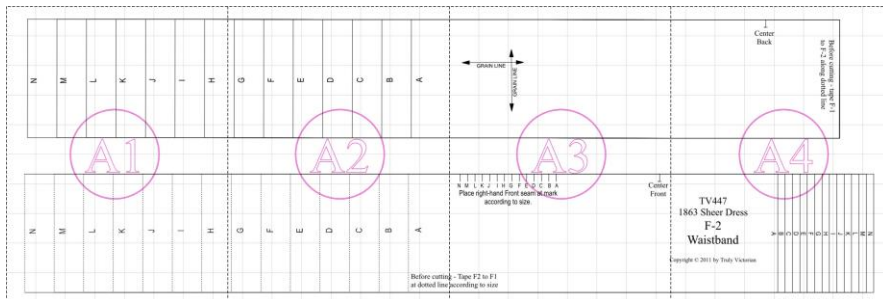


# *Truly Victorian* PDF Pattern and Assembly Diagram

## **TV447 – Corrected Waistband**

This pattern comes in 4 tiled pages. They should be assembled in grid fashion, using the guide below as a reference. Print file at 100% size. Do not print from Microsoft Edge, as the pages never seem to print at the correct size. For best results, print from Adobe Acrobat, which can be downloaded online for free.



### Letter Size Paper

#### Reference Rectangle

This rectangle should  
measure **exactly**  
3" x 2"  
if page is printed at 100%  
size.

### A4 Size Paper

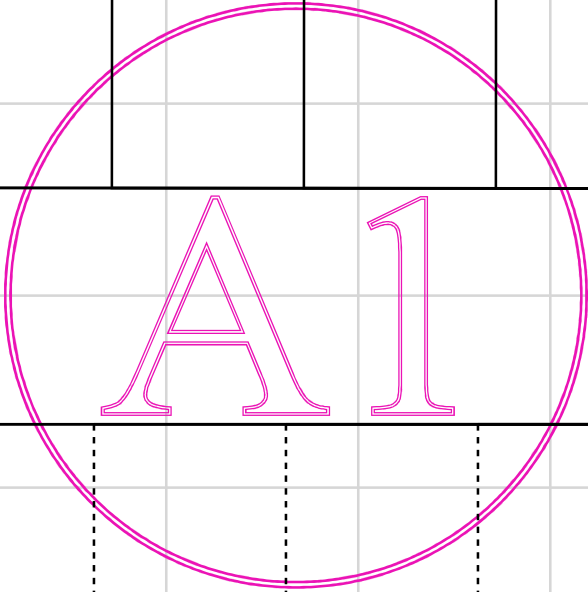
#### Reference Rectangle

This rectangle should  
measure **exactly**  
5cm x 7cm  
if page is printed at 100%  
size.

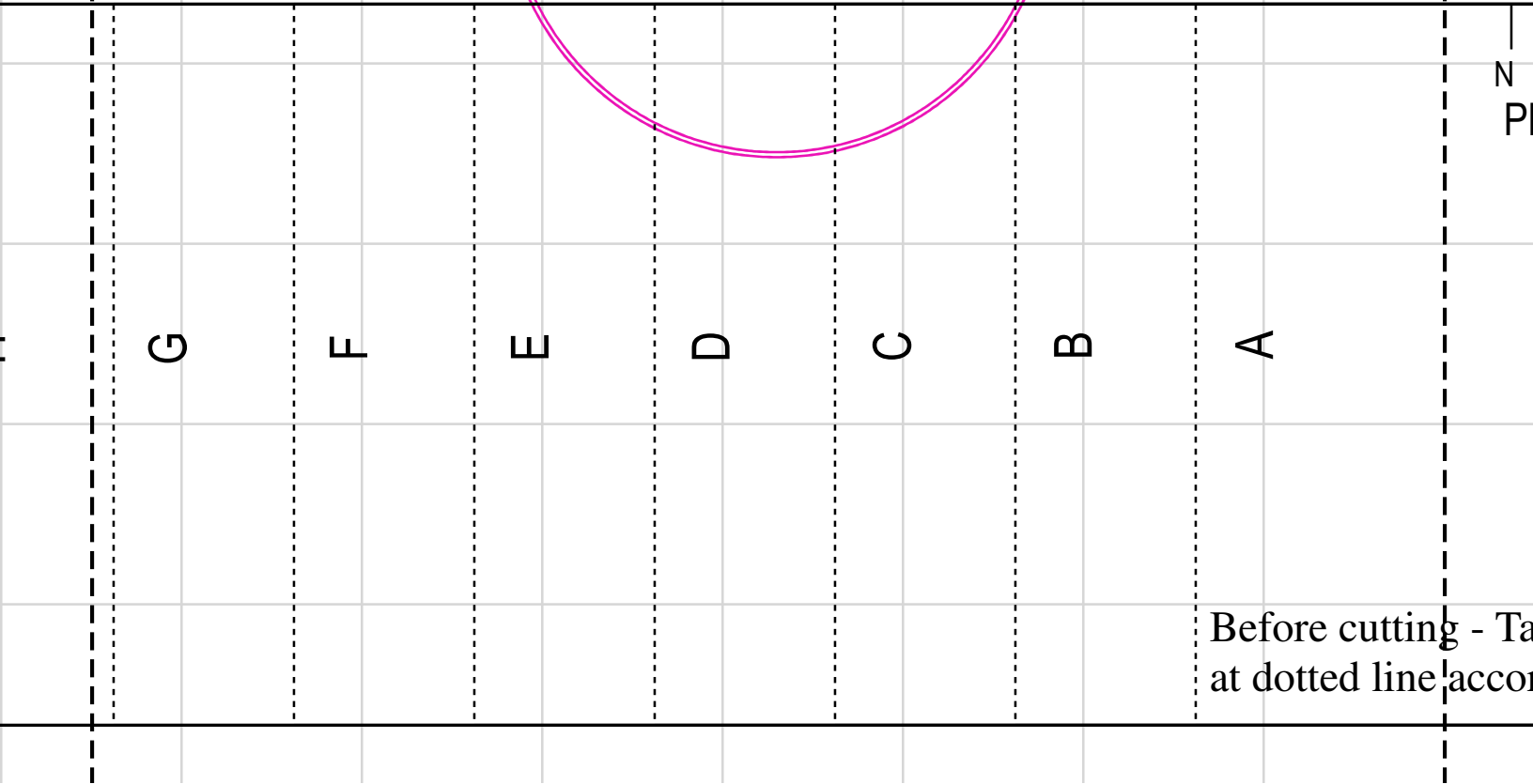
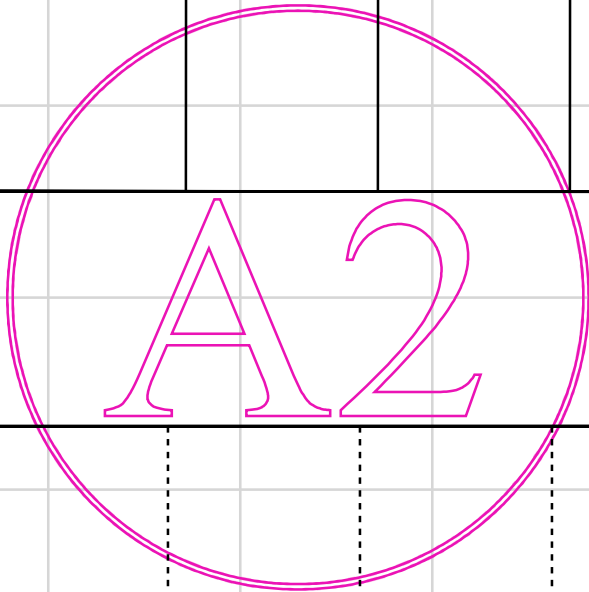
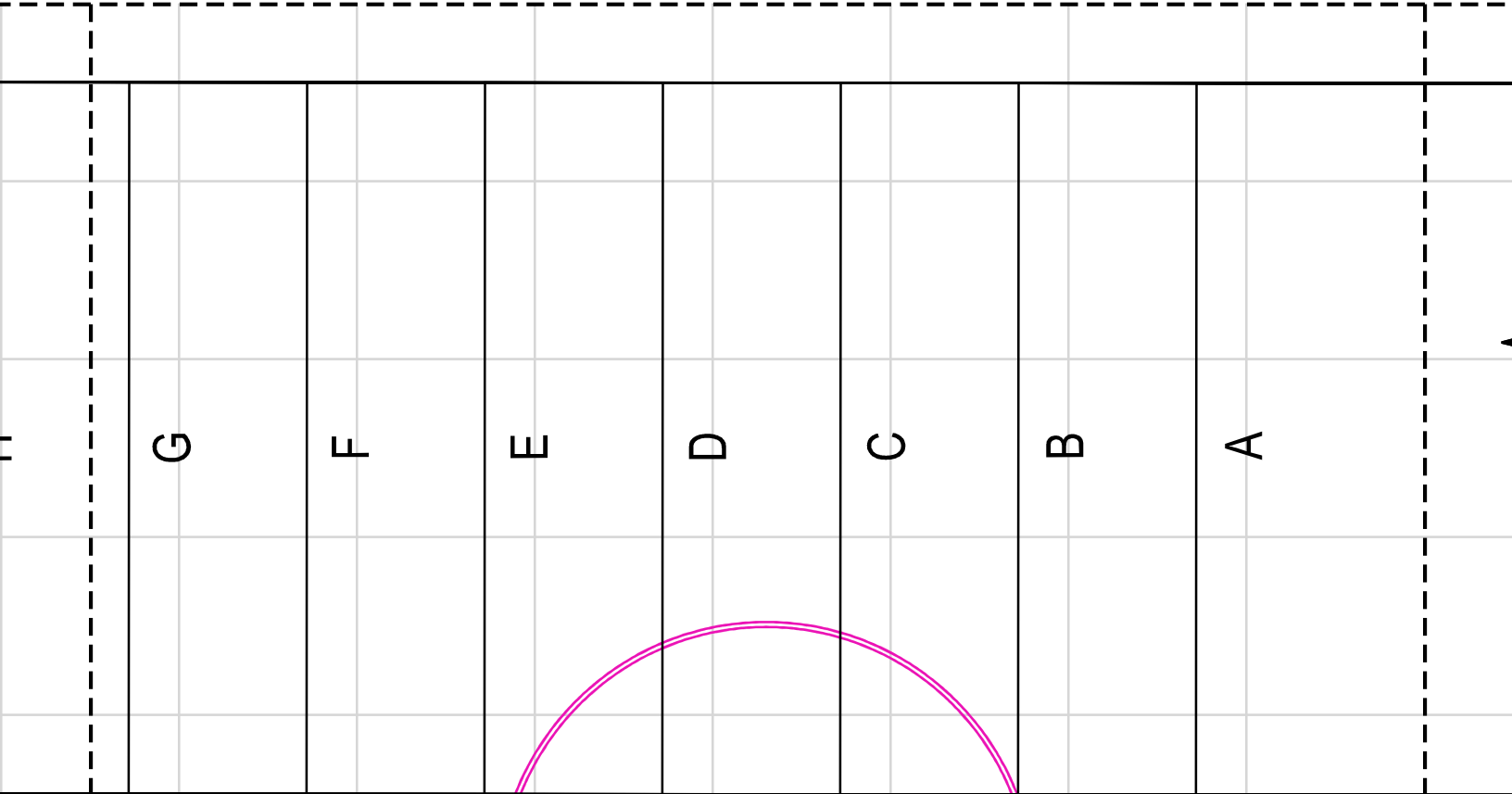
*Instructions, illustrations, and text are © copyright Truly Victorian*

This pattern may not be shared, reproduced, resold, or transmitted in any form for any reason.

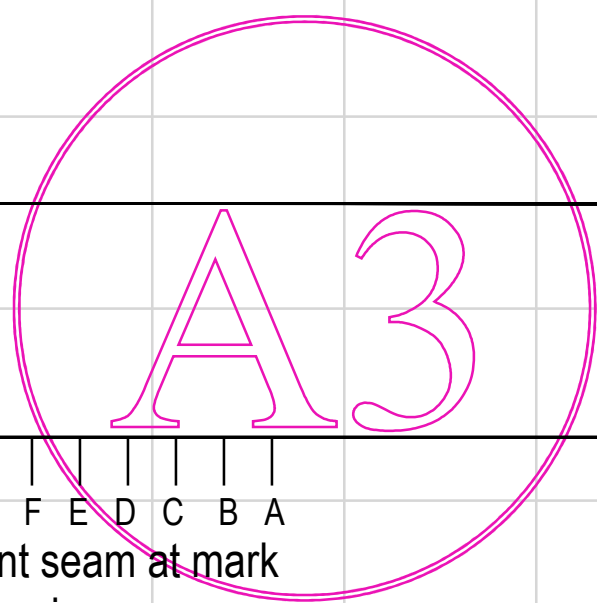
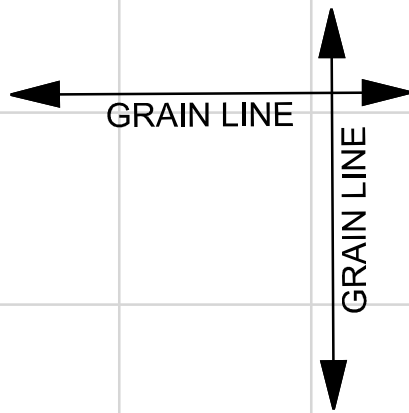
N	M	L	K	J	I	H	G
---	---	---	---	---	---	---	---



N	M	L	K	J	I	H	G
---	---	---	---	---	---	---	---



Before cutting - Take  
at dotted line according



N M L K J I H G F E D C B A

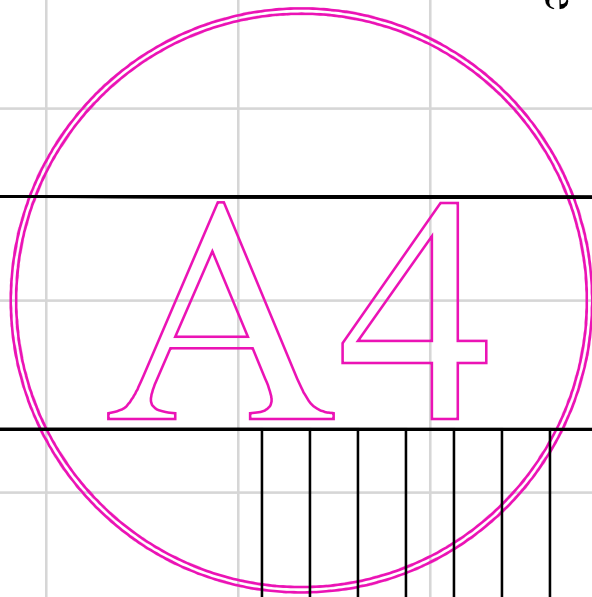
Place right-hand Front seam at mark according to size.

Center Front

cutting - Tape F2 to F1  
d line according to size

Center  
Back

Before cutting - tape F-1  
to F-2 along dotted line



Center  
Front

TV447  
1863 Sheer Dress  
F-2  
Waistband

A B C D E F G H I J K L M N

Copyright © 2011 by Truly Victorian